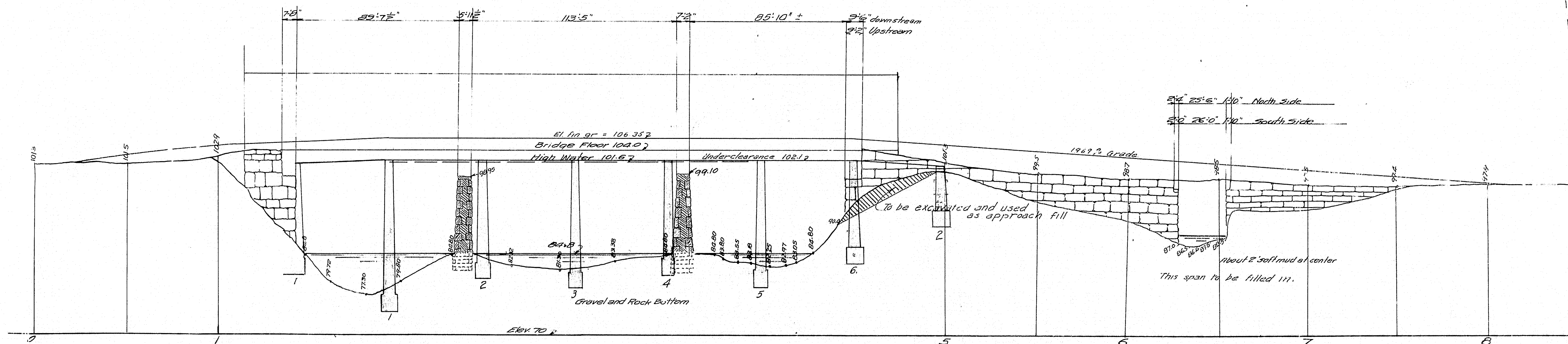
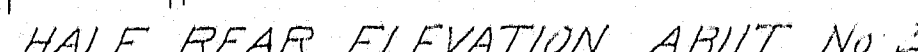
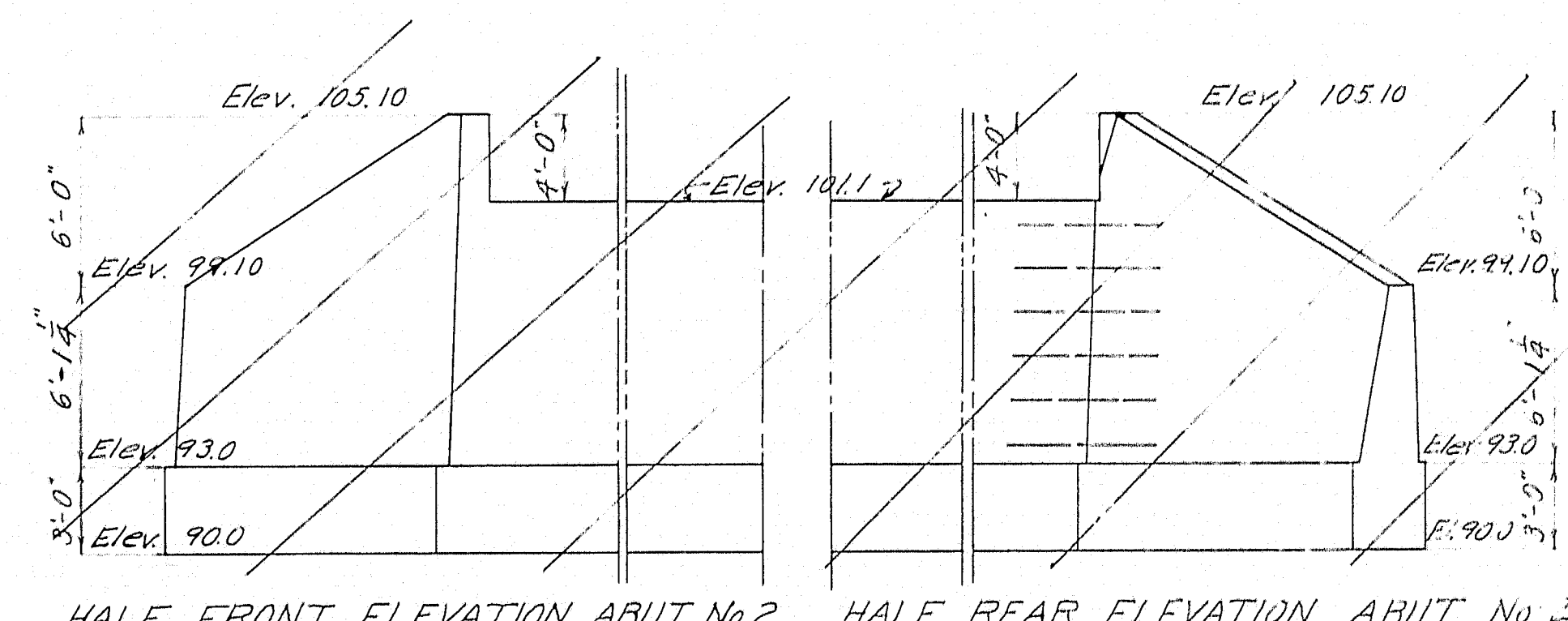
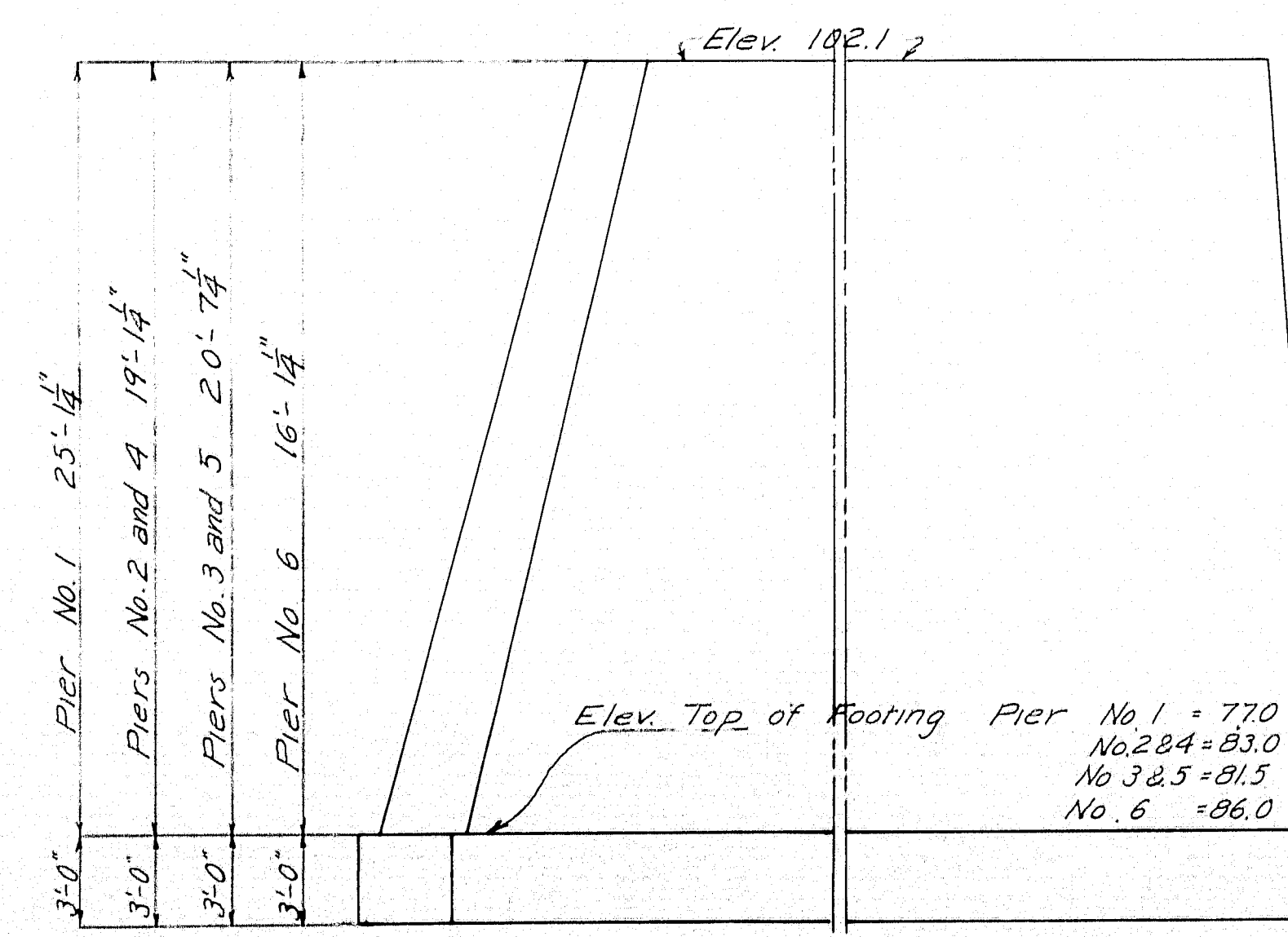
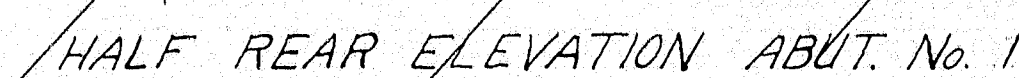
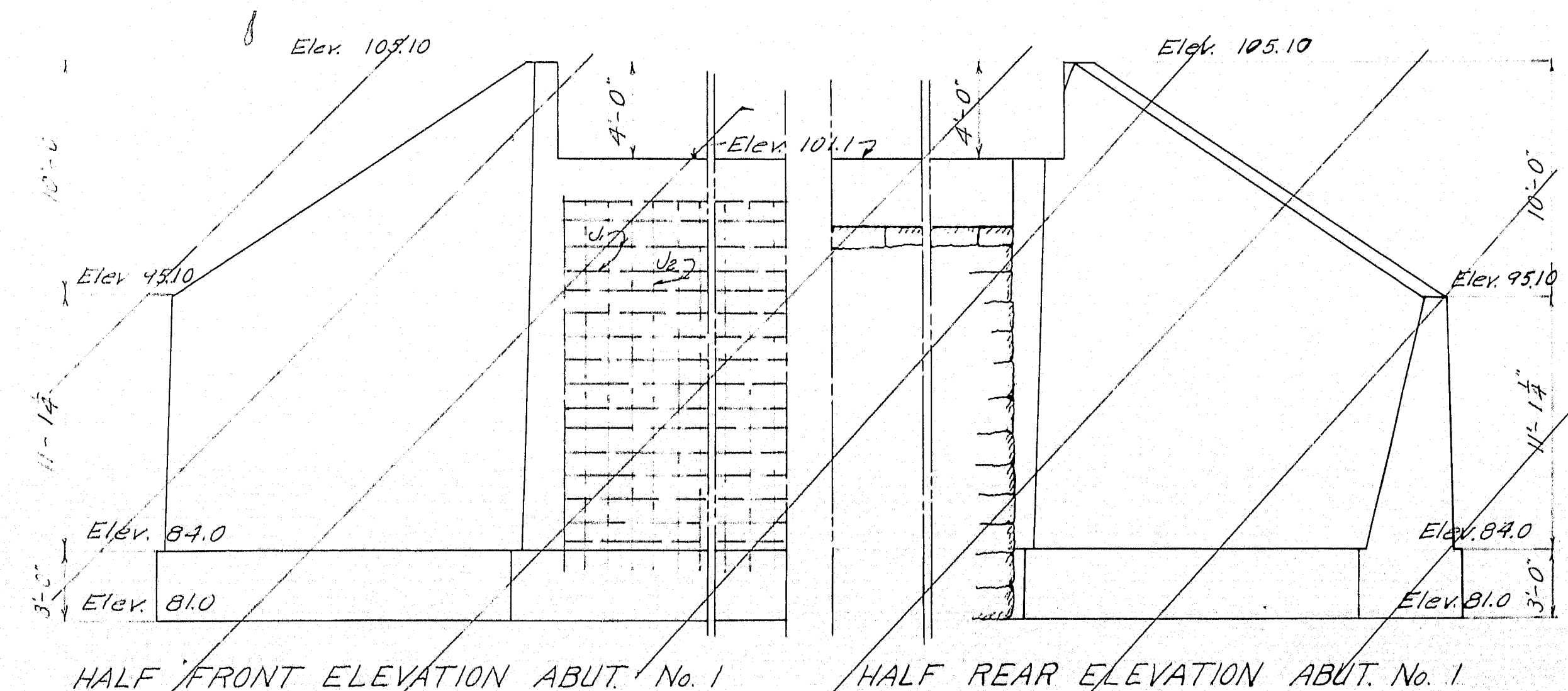
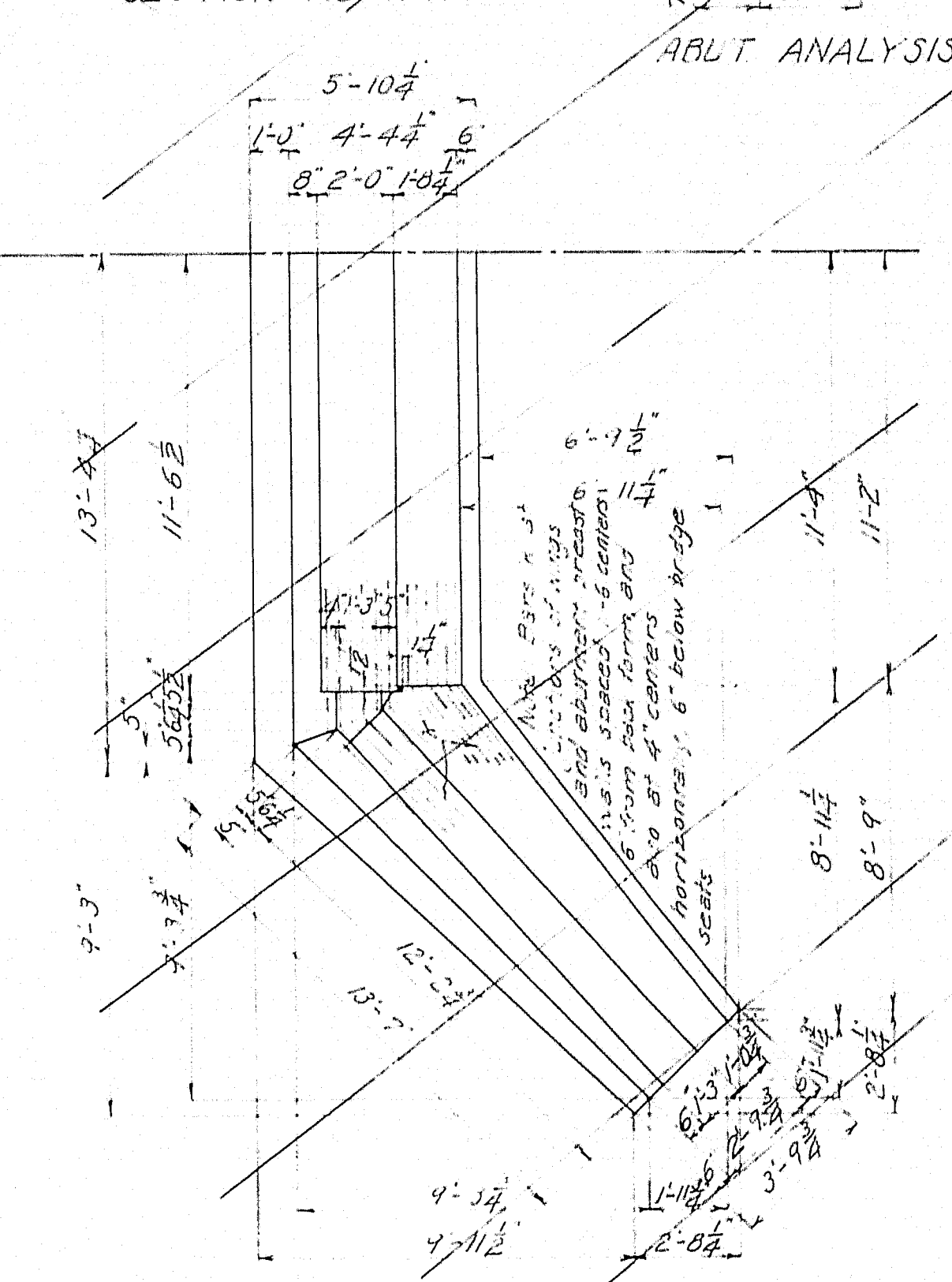
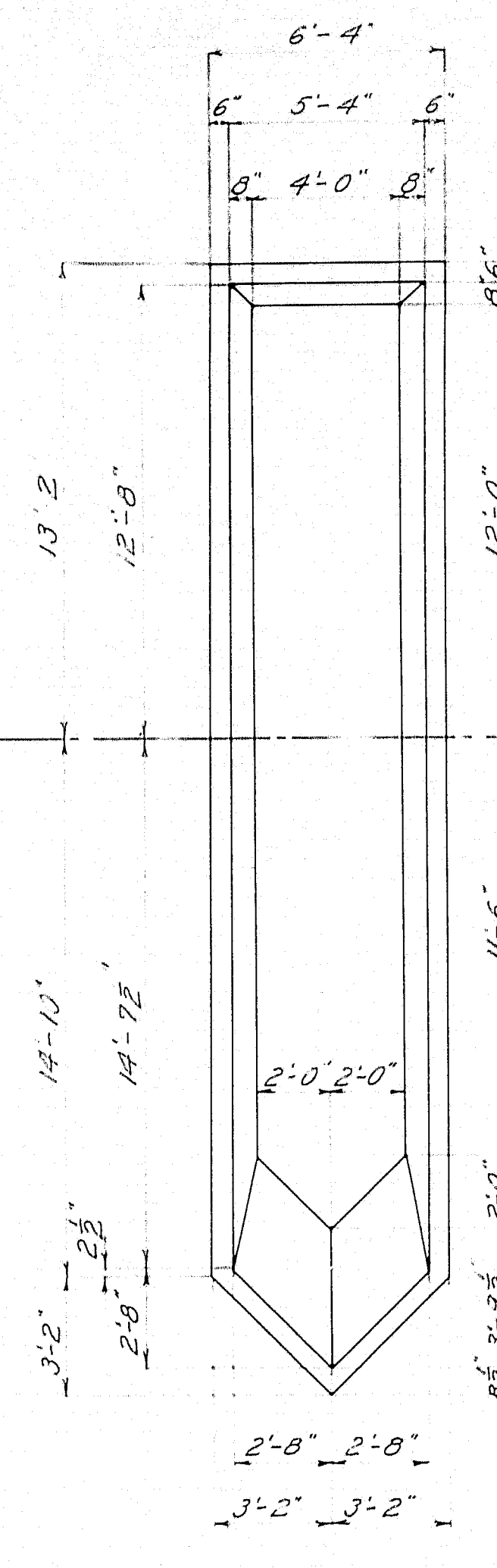
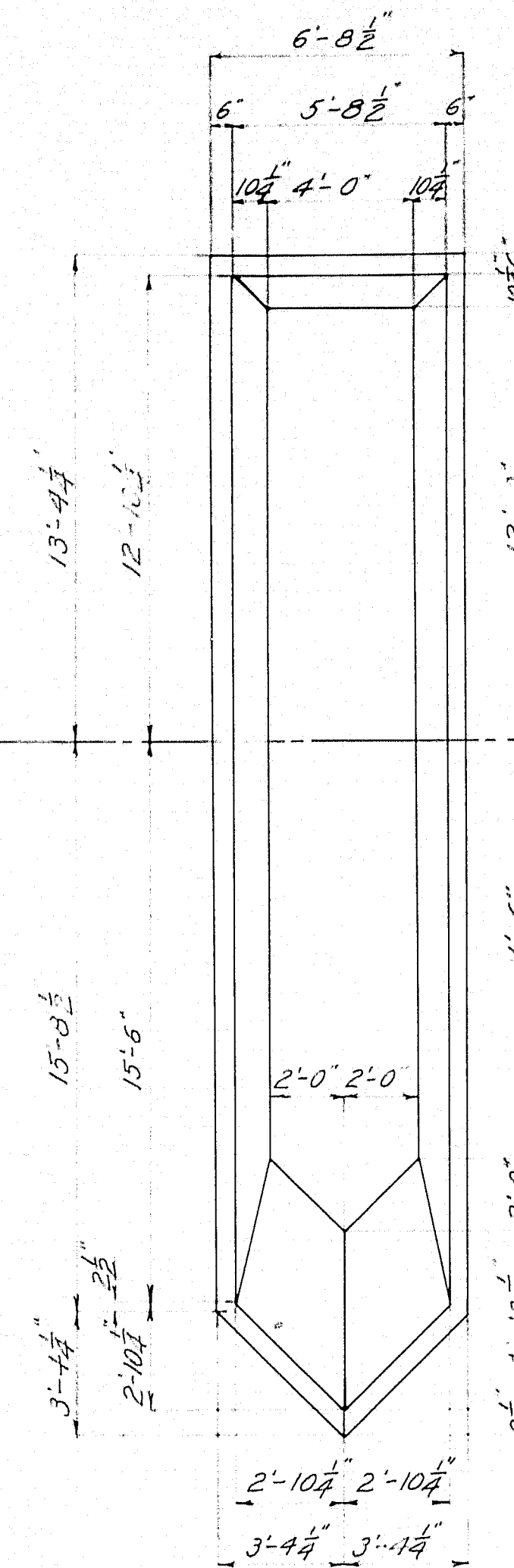
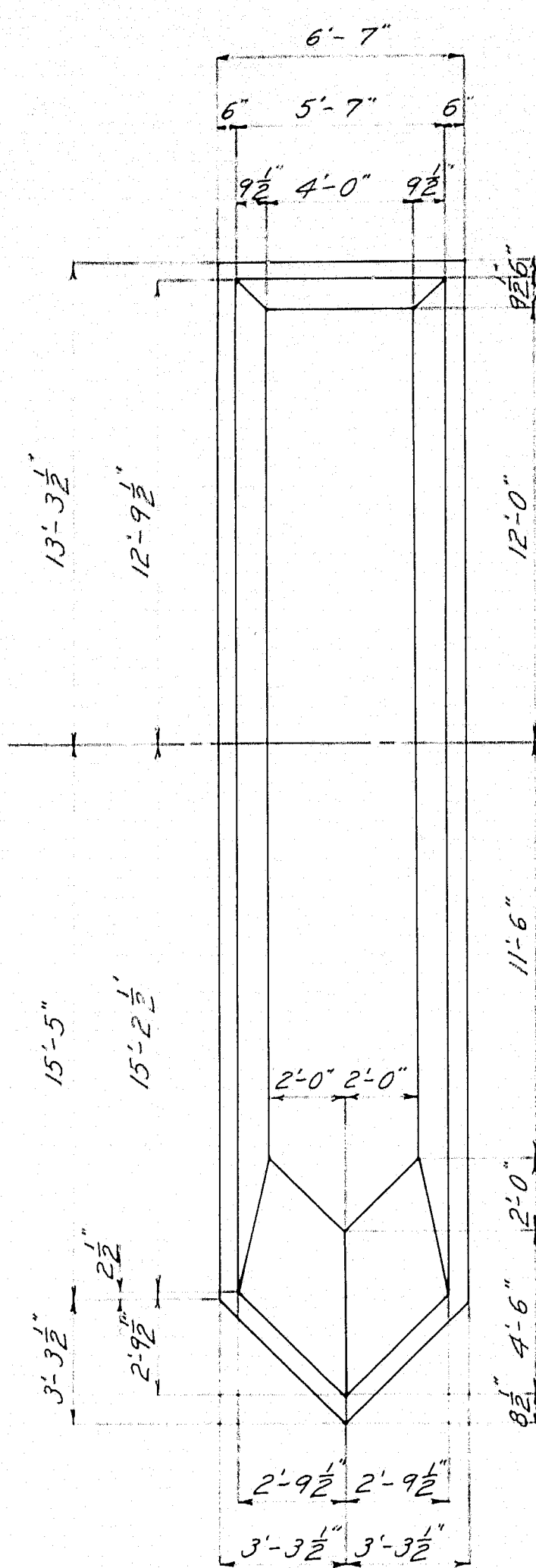
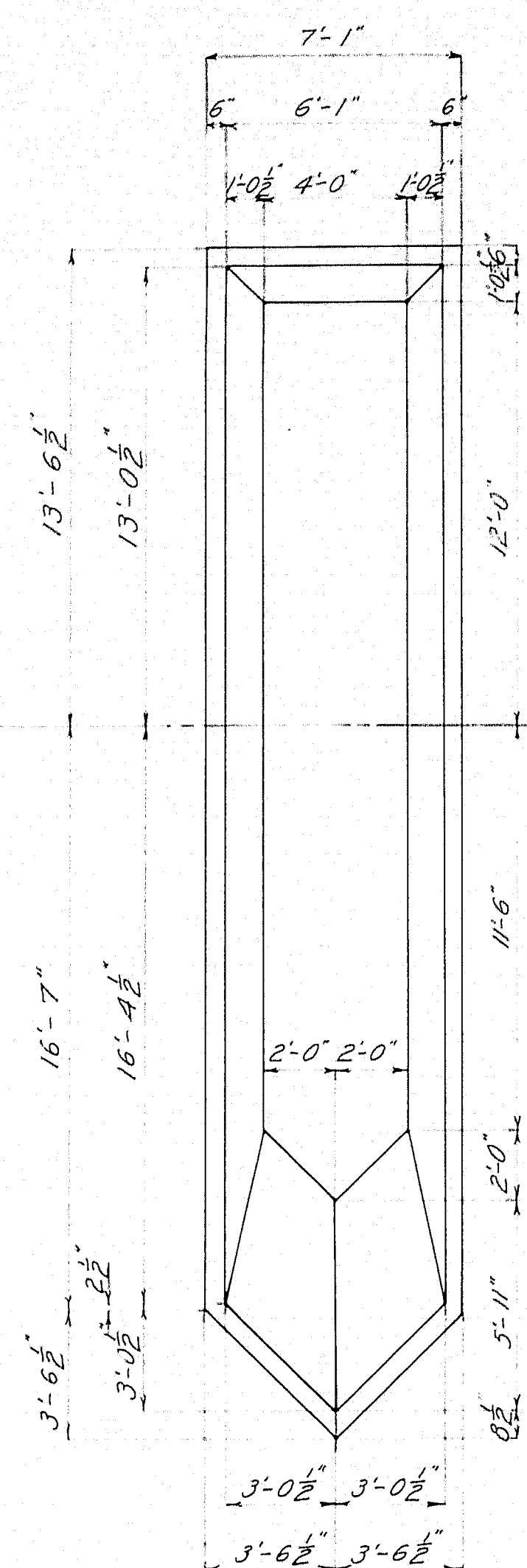
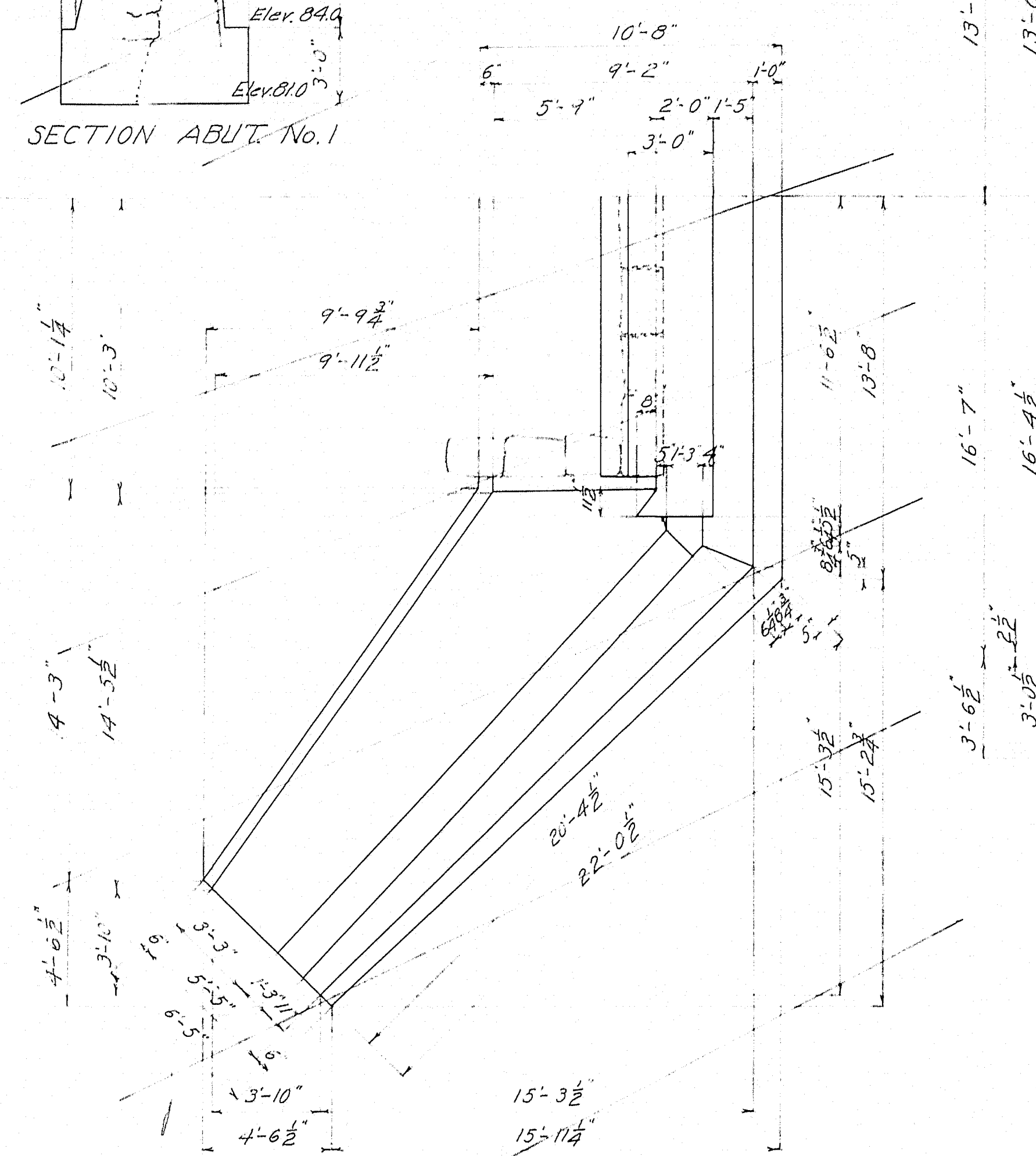
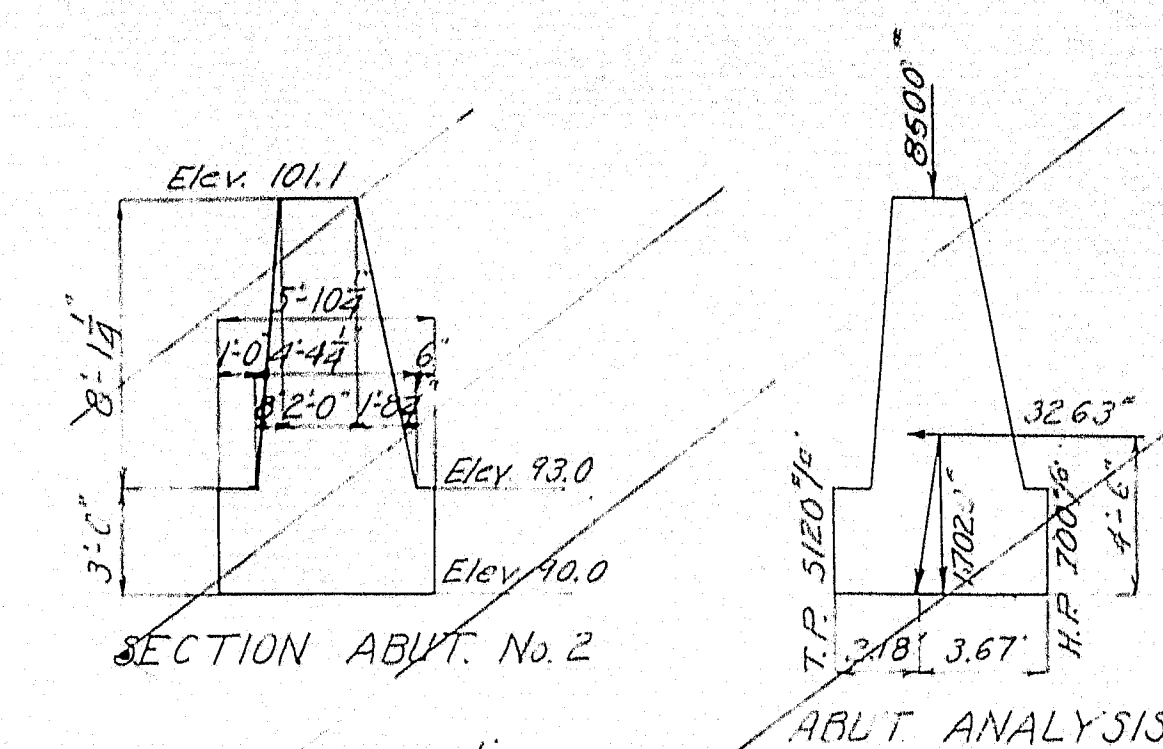
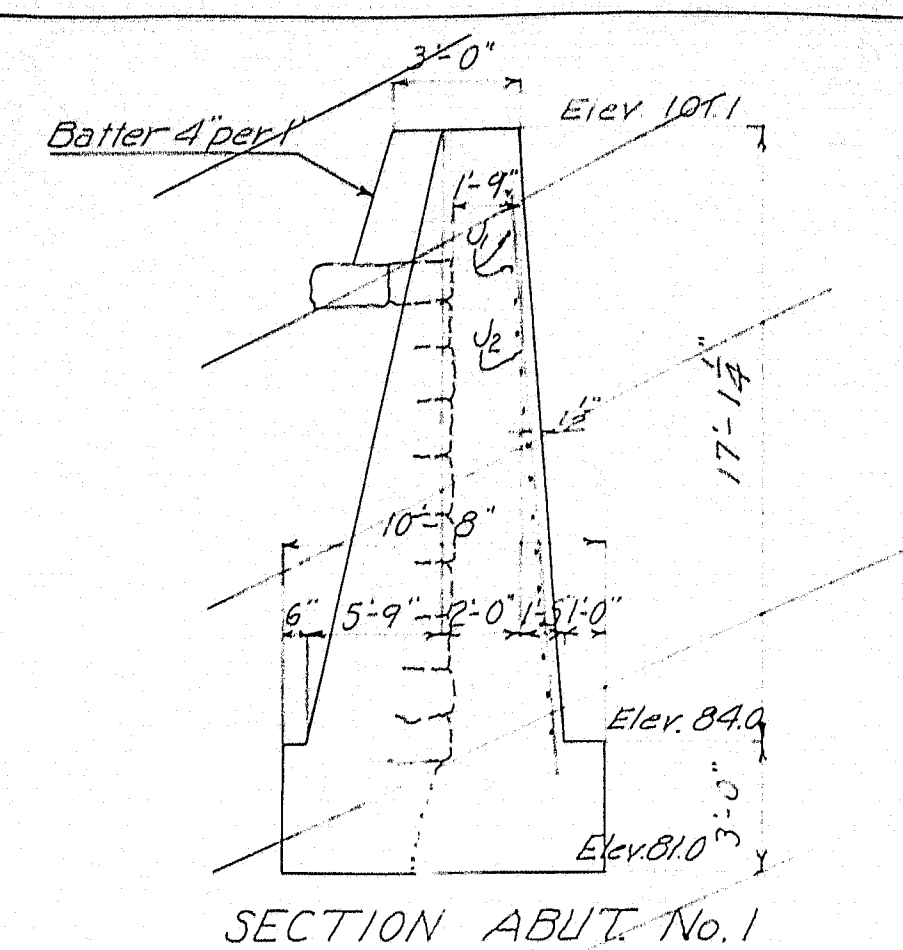


Scale: Hor. 1"=30'
Ver. 1"=10'



Note: The quarried stone in the existing abutments and piers is to be removed and stored at a location suitable for reloading. The distance to the location of storing will not exceed 1000 feet from the bridge site.

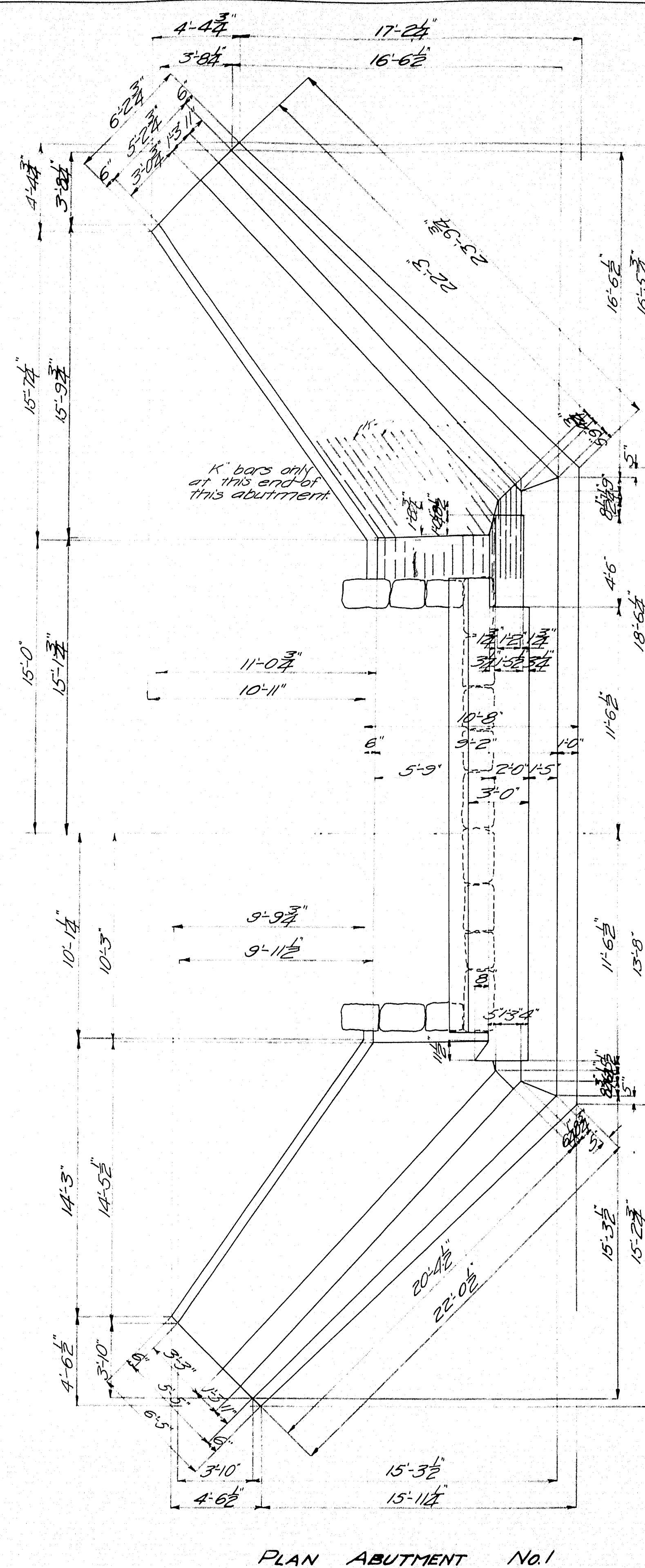
STATE HIGHWAY COMMISSION
BRIDGE DIVISION
BRIDGE OVER
MATTAWAMKEAG RIVER
IN THE TOWN OF
MATTAWAMKEAG
PENOBSCOT CO. ME.
SURVEY PLAN SHEET 1 OF 3 NOV. 1924



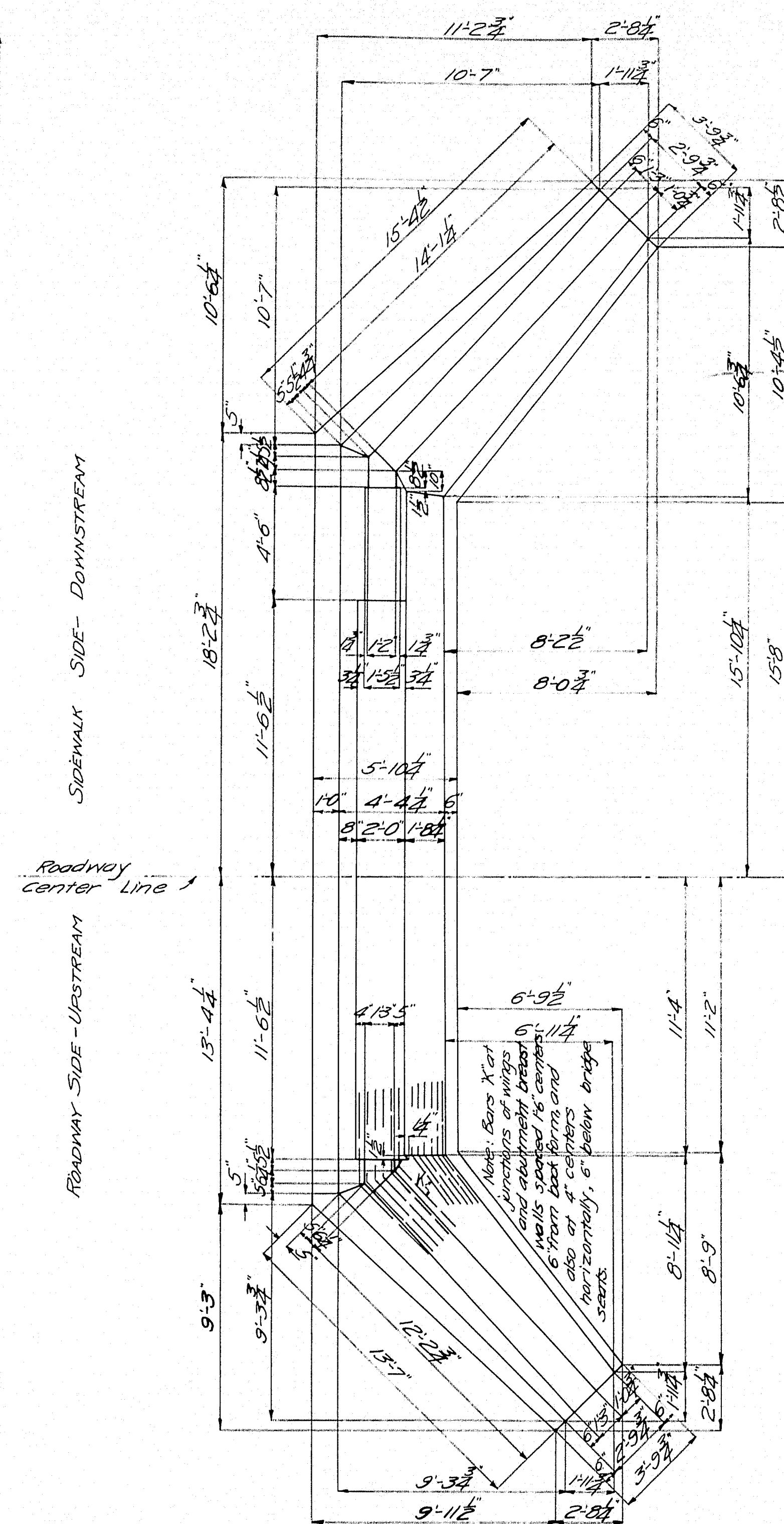
MAINE HIGHWAY COMMISSION
BRIDGE DIVISION

MATTAWAMKEAG BRIDGE
OVER
MATTAWAMKEAG RIVER
IN THE TOWN OF
MATTAWAMKEAG
PENOBSCOT CO. ME.
SUBSTRUCTURE DETAILS

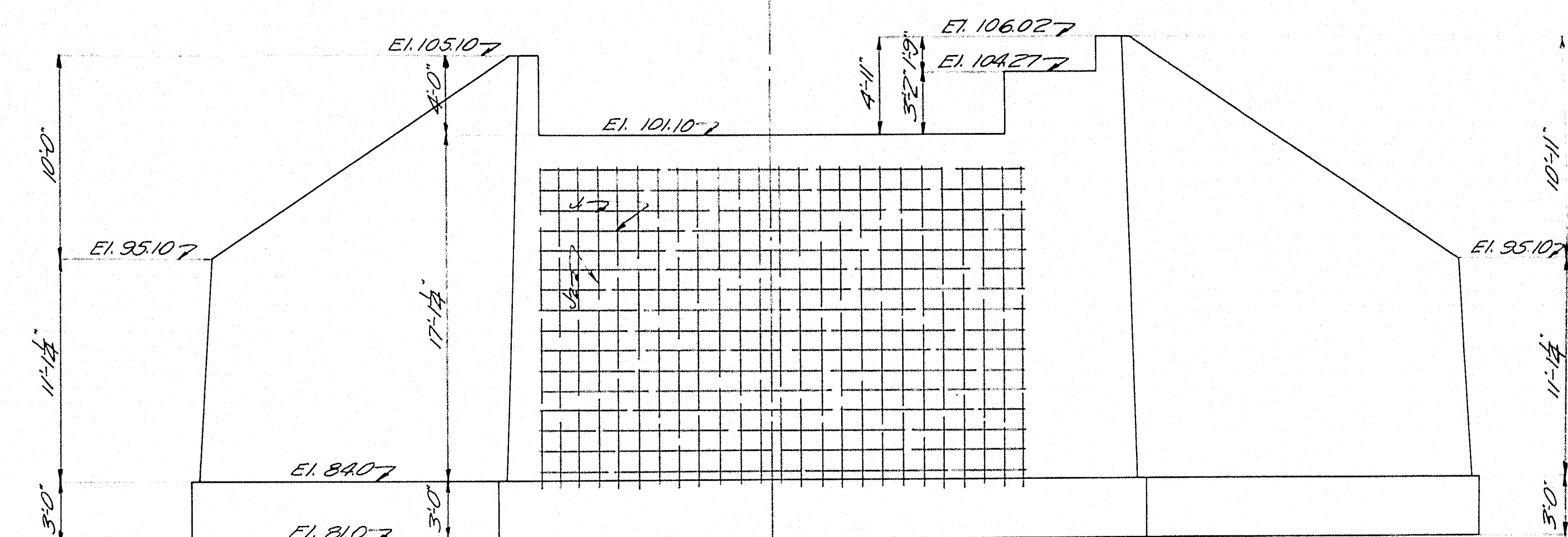
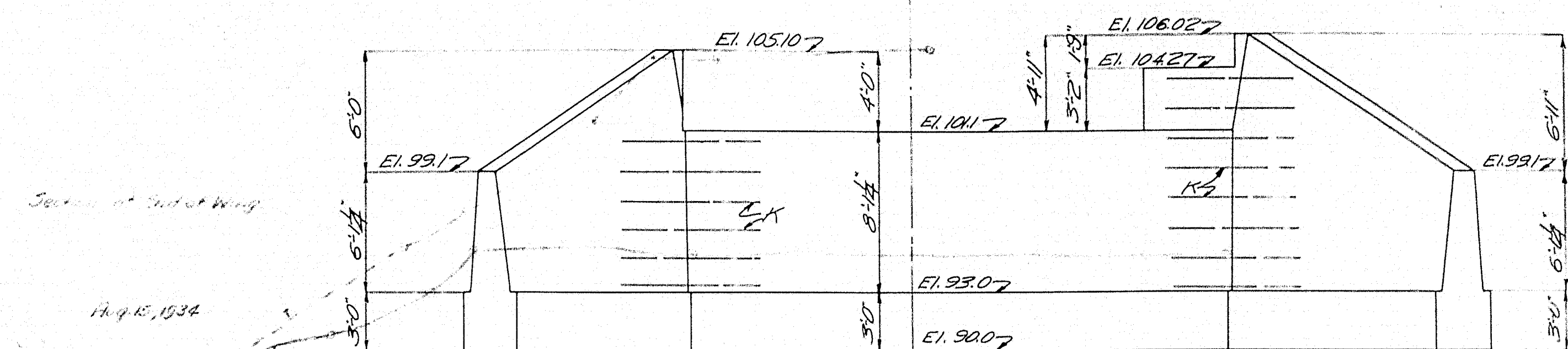
Sheet 2 of 3 August 17e Jan. 21, 1971



PLAN ABUTMENT No. 1

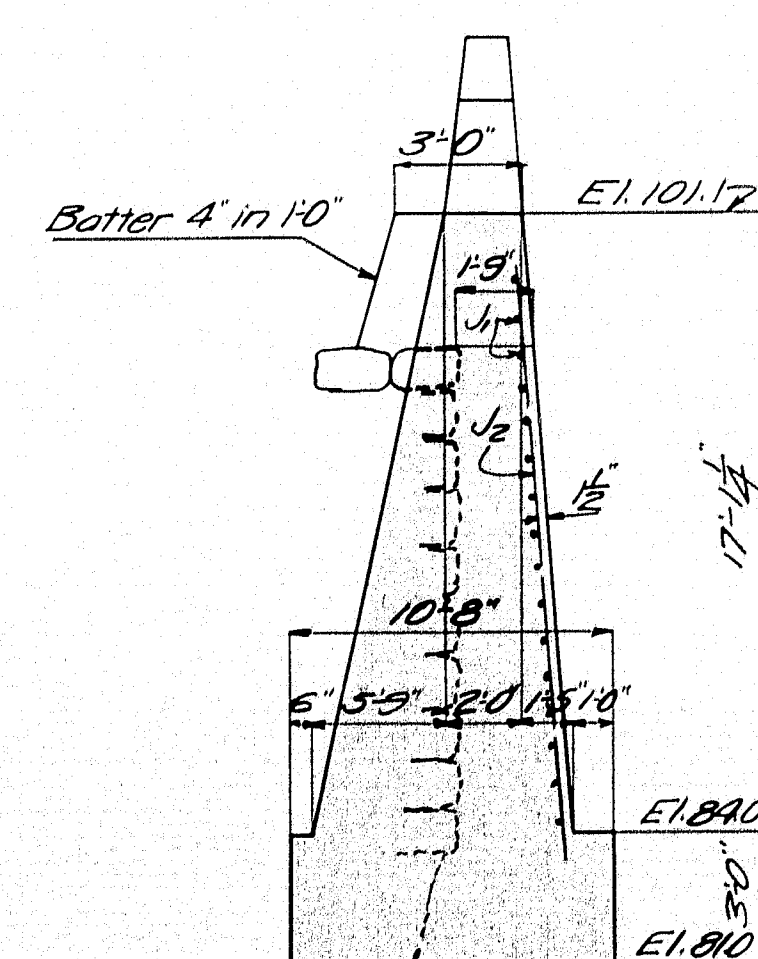


PLAN ABUTMENT No.2

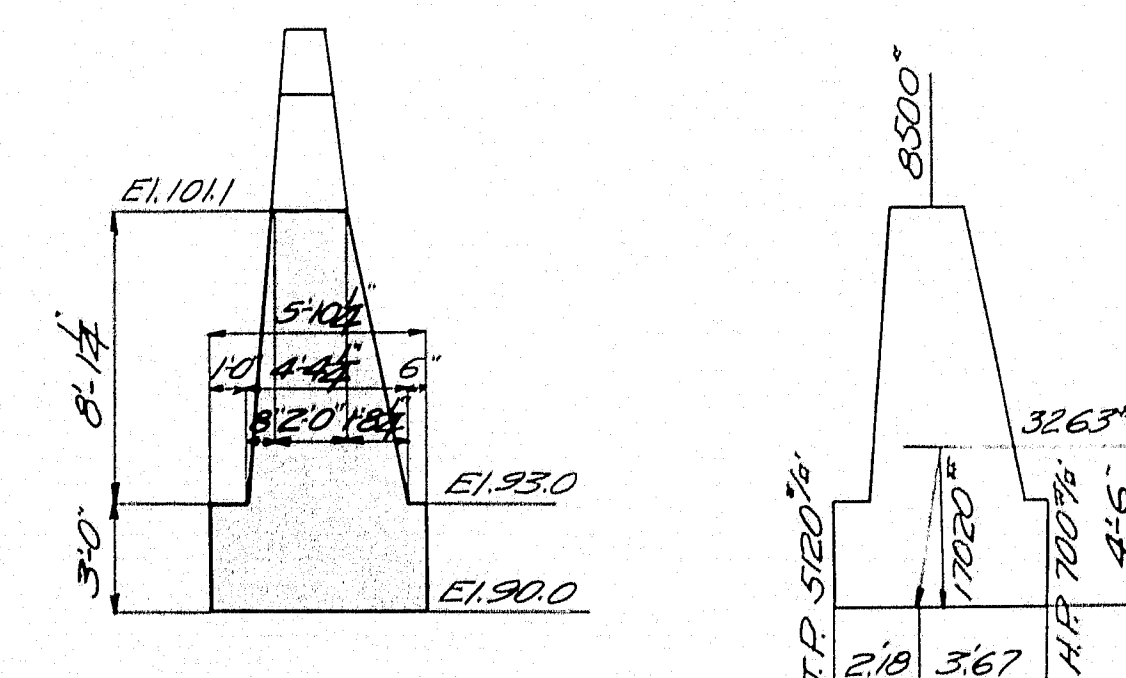


J-Bars spaced 1'-0" centers.

ROADWAY SIDE	SIDEWALK SIDE

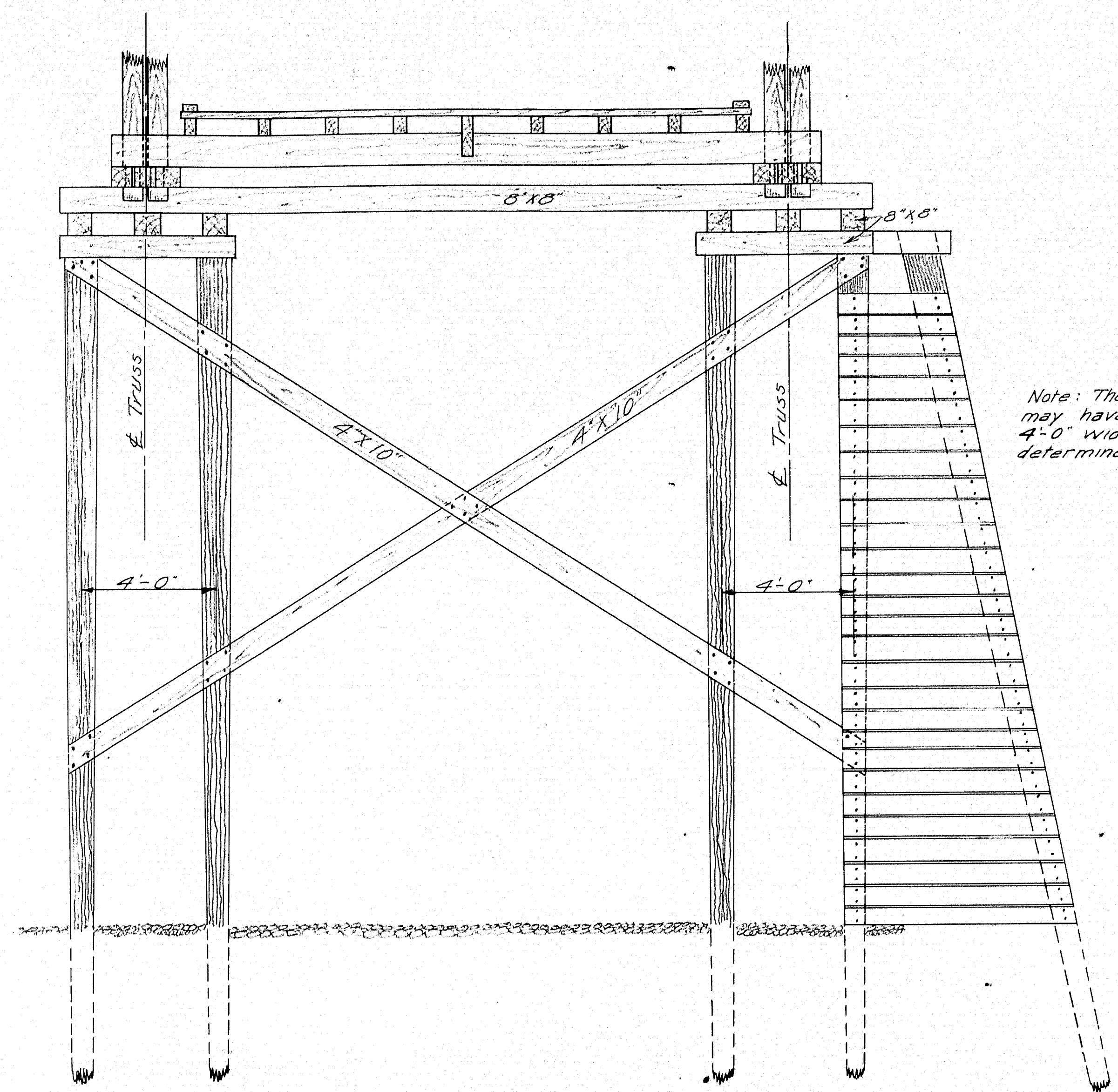


SECTION ABUTMENT No.1

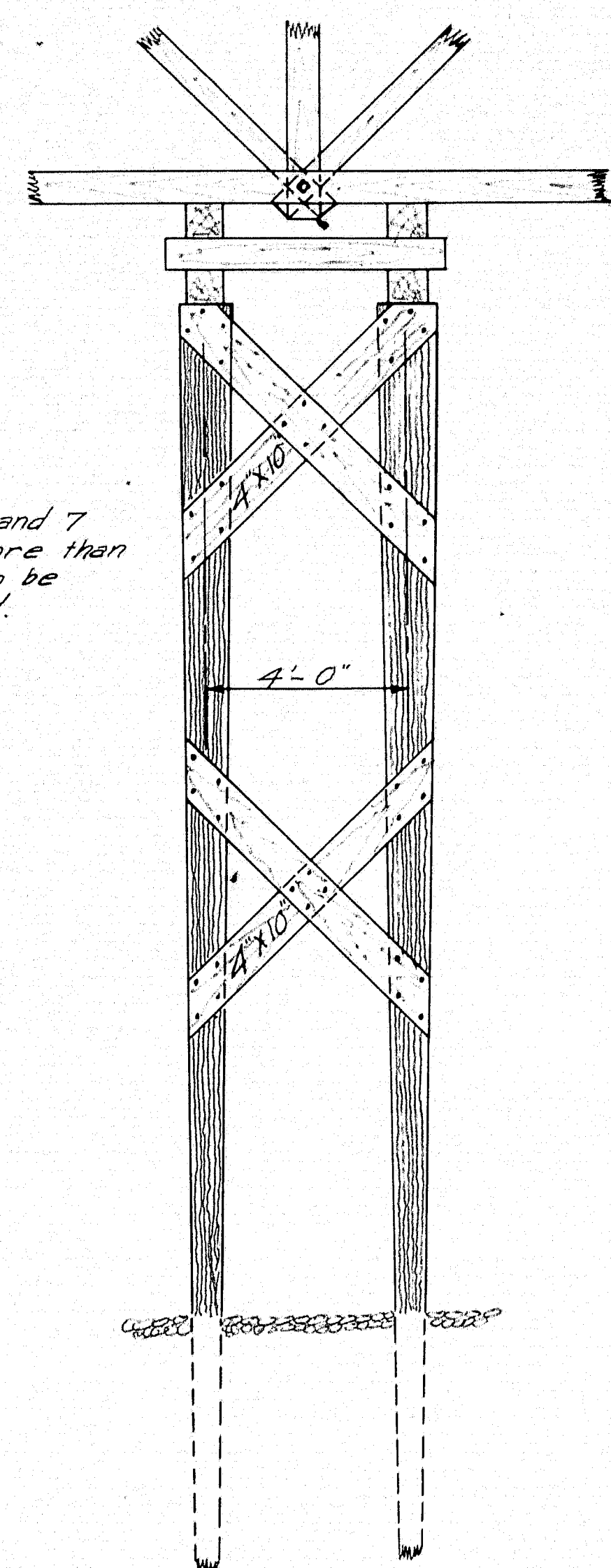


SECTION ANALYSIS
ABUTMENT No.2

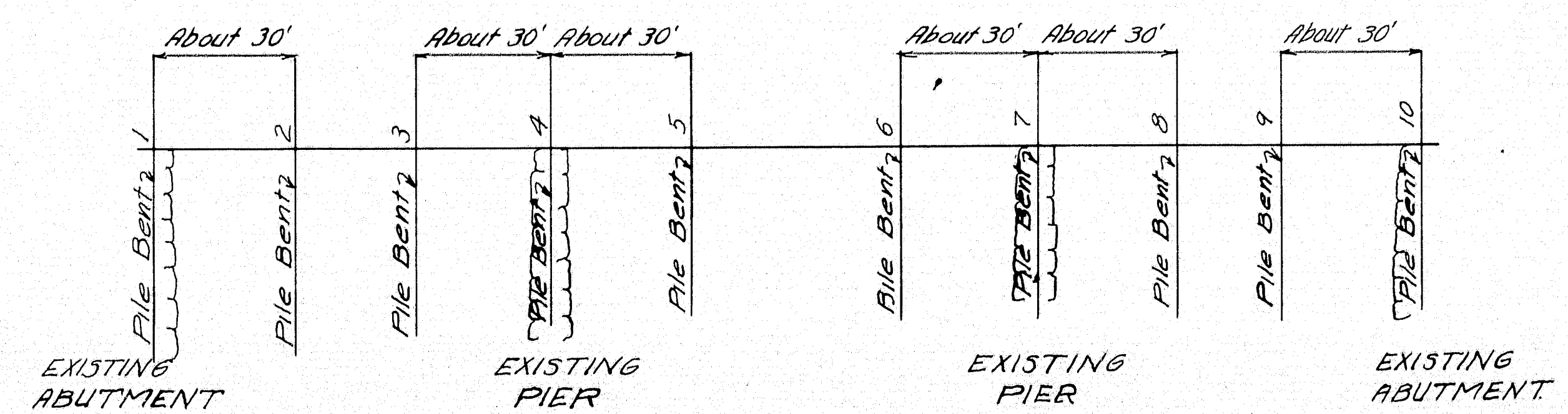
MAINE HIGHWAY COMMISSION
BRIDGE DIVISION
MATTAWAMKEAG BRIDGE
OVER
MATTAWAMKEAG RIVER
IN THE TOWN OF
MATTAWAMKEAG
PENOBSCOT CO. ME.
ABUTMENTS REVISED
Sheet 2 of 3 Augusta Me June 18, 1928



Note: The bents 4 and 7 may have to be more than 4'-0" wide. Width to be determined in field.



Note: The details of a pile bent shown on this sheet typical of construction required to support the existing bridge at a location downstream from the present location. The ice breaker nose is necessary if the period of construction includes late fall or spring months. Approaches will be constructed and traffic maintained over the existing bridge at its new location.



MAINE HIGHWAY COMMISSION
BRIDGE DIVISION
MATTAWAMKEAG BRIDGE
OVER
MATTAWAMKEAG RIVER
IN THE TOWN OF
MATTAWAMKEAG
PENOBSCOT CO. ME.
Temporary Bridge Details
E.H.H. August 14, Mar. 23, 1926

